



TMS E-News - 10/19/18

From the TMS Staff to all of the parents who provided another meal for a long evening of conferences,

THANK YOU!

We appreciate the effort, and enjoy all of the tasty dishes provided!

* * * * *

**In the afternoon, please use the parking spots to wait for your student.
DO NOT park along the curb as this blocks the flow of traffic.
PLEASE DO NOT use the entrance as an exit!**

Oct. 23 - Picture Retake Day

Oct. 24 - 7th & 8th Grade Bands w/THS Marching Band @ THS - 7:00 pm

Oct. 26 - Halloween Dance - 2:40-4:15 pm (see flyer below)

Parents: Primary Health Solutions Mobile Dental Program will be starting up again this month. If interested, please contact Terri Horvath RN at #273-3314 for additional information. This is a great program!



**-Any student that carries an inhaler or epipen at school must have a medication permit on file in the clinic.
-Parents of 7th Graders - If you have not already done so, please send in proof of your child having received the tdap and meningitis immunization.**

Please call Terri Horvath RN at 273-3314 with any questions. Thank you.

Any 5th - 8th-Grader who has completed an act of volunteerism and would like to be considered for a \$1000 cash is encouraged to apply for the Prudential Spirit of Community Award. The application can be found online at spirit.prudential.com and is due by November 6th. Talawanda will have one local winner (grades 5-8) who will be considered for the State Award, \$1000, and a trip for themselves and a parent/guardian to Washington, DC this spring for a 4-day recognition ceremony.

HALLOWEEN DANCE!

Date:

Friday, October 26, 2018



Time:

2:40 - 4:15

You Must Have A Ride At 4:15!



Cost:

\$2

WEAR YOUR COSTUMES!
(After School *ONLY!*)

#



Woodworking club will begin Monday, November 5th. It is limited to 12 8th graders and we will meet every other Monday after school until 4pm. Signups will be during lunch on Monday, October 15th. If you have any questions, please contact Larry Brock at BrockL@talawanda.org

ART! ART! ART!
ART!

JOIN THE NEW TMS ART CLUB

**work with professional artists and
students to create art**

**First Meeting
Tuesday, October 23 2:45 - 4:00 pm.
Check with the Office for room
location**

**Oxford Community Art Center and TMS
collaborate to create a new club**

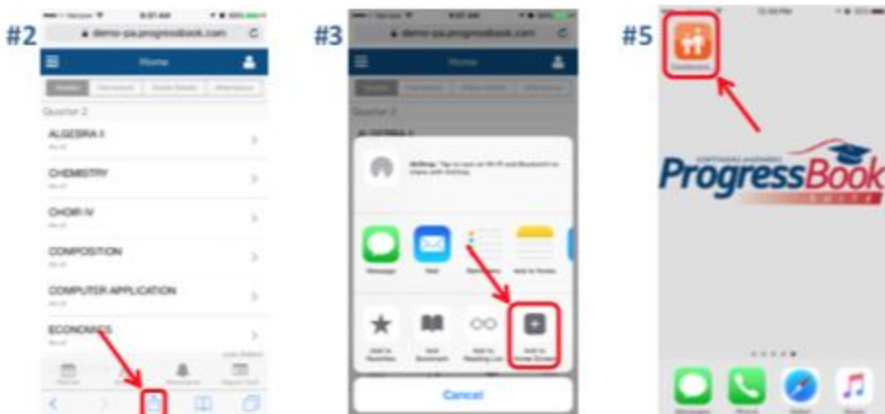
How to Add a ProgressBook ParentAccess Icon to Your Mobile Device Home Screen


Article # 2042

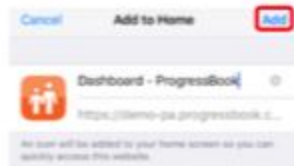
ProgressBook ParentAccess is designed to work seamlessly on mobile devices. This guide shows you how to add a shortcut to the ProgressBook web application on your iOS or Android mobile device's home screen.

Procedure for iOS

1. Using your browser, navigate to your designated ProgressBook website and successfully log in.



2. At the bottom middle of your screen, click .
3. On the menu that pops up, click **Add to Home Screen**.
4. Enter your desired name for the shortcut and click **Add** in the top right corner.



5. The icon now displays on your iOS device's home screen.

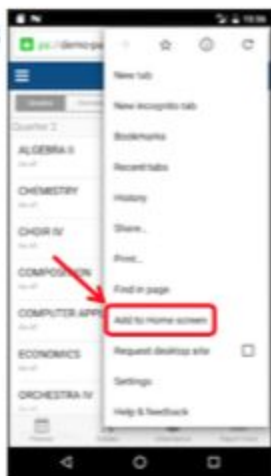
Procedure for Android

- Using the Chrome browser , navigate to your designated ProgressBook website and successfully log in.

#2




#3



#5



- At the top right of your screen, click .
- On the menu that pops up, click **Add to Home Screen**.
- Enter your desired name for the shortcut and click **Add**.

Add to Home screen



- The icon now displays on your Android device's home screen.

Note: The Chrome browser must be used to create the shortcut on Android phones. If you open the ParentAccess website with the Google application instead, you will have to click the menu button, click "Open in Browser", select Chrome, and then follow the instructions above.

Oxford Empty Bowls

A benefit soup luncheon dedicated to hungry people in our community

*Held in conjunction with Hunger + Homelessness Awareness Week and
the City of Oxford/Talawanda Schools/Miami University's Veterans Appreciation Day*



Saturday, November 10, 2018

11:00 a.m. – 2:00 p.m.

❖ **Oxford Community Arts Center** ❖

Purpose: To join other Empty Bowls projects worldwide to raise awareness and money to combat hunger. All proceeds will be donated to the Oxford Community Choice Pantry and other area organizations to support their efforts to provide food to local people in need.

How it Works: At the luncheon, guests choose from amongst a collection of beautiful bowls created, decorated and donated by Miami University and Talawanda students and Oxford-area potters. Their bowls are then filled with their choice of soups made by local cooks. Luncheon guests then keep their bowls to use or display at home and to serve as a reminder that there are always empty bowls in the world. Homemade bread and desserts, and beverages donated by area businesses will also be served.

Cost: \$10 adults; children 10 and under may eat for free (bowl not included).

For more information on Oxford Empty Bowls, please contact Connie Malone, 513-330-1273

Co-sponsored by the Office of Community Engagement & Service, Miami University



**"Together, building a healthier
community"**

**Plant the Promise
Saturday, October 27th
10:00 a.m.
Uptown Oxford Park**

**Join us to plant red tulip bulbs
throughout the community as a
symbol of our commitment to making
the Oxford-Area a safe, healthy
community for all! For more
information, call 513.273.3390 or
email macechkoa@talawanda.org.**

TSD APPROVED
for distribution
not affiliated with TSD

MEDICATION

DISPOSAL DAY

SATURDAY, OCTOBER 27TH

8:00AM TO 12:00PM

UPTOWN OXFORD - MEMORIAL PARK



Bring your expired, unused
prescription or over-the-counter
medications. Law Enforcement
will dispose of the contents in a
safe, legal, and environmentally
conscious manner.

TSD APPROVED
for distribution
not affiliated with TSD



Looking for
a chance to
win cool
prizes?

Need a good
reason to be
on your
phone?

#ASSET CHALLENGE

1. Follow @FCFCButlerCnty on 
2. Complete any of the weekly activities and tag #AssetChallenge for a chance to win!
3. Challenge your friends and family!



An Initiative The Butler County Coalition For Safe, Drug-Free Communities and The Family & Children First Council



THE ASSET CHALLENGE



The Butler County Coalition and Family and Children First Council challenge you to join the #Asset Challenge! The Search Institute has identified Developmental Assets, which we all can share with children and youth so they can thrive. We challenge youth, parents, teachers, and community members to try at least one activity a week.

Share your moments with us by posting a photo or your thoughts and tag @FCFButlerCnty or #AssetChallenge

OCTOBER

This Month's theme is: Empowerment

WEEK 1: COMMUNITY VALUES YOUTH

INVITE A YOUNG PERSON TO YOUR NEXT COMMUNITY MEETING OR EVENT

LISTEN TO A YOUTH TELL YOU ABOUT THEIR DAY WITHOUT INTERRUPTING

LOBBY COMMUNITY GROUPS TO MAKE YOUTH INCLUDED IN MEMBERSHIP

GREET THE NEXT YOUNG PERSON YOU SEE BY NAME

THANK THE YOUTH IN YOUR LIFE FOR THEIR HELP, NO MATTER HOW BIG OR SMALL

WEEK 2: YOUTH AS RESOURCES

CHALLENGE YOURSELF TO GET TO KNOW A YOUTH IN YOUR LIFE BETTER

ASK A YOUNG PERSON FOR THEIR HELP

REMIND YOUR YOUTH THAT YOU APPRECIATE THEIR THOUGHTS AND IDEAS

GIVE YOUTH A MEANINGFUL ROLE OR JOB WITHIN THE HOME OR CLASSROOM (TIMEKEEPER, TECH HELPER ETC.)

ASK YOUTH THEIR OPINION ON A POPULAR TOPIC

WEEK 3: SERVICE TO OTHERS

VOLUNTEER IN THE COMMUNITY FOR AT LEAST 1 HOUR THIS WEEK

HELP YOUTH BRAINSTORM WAYS THEY CAN HELP THEIR COMMUNITY

DISCUSS WHAT VOLUNTEERING MEANS

VISIT A SERVICE ORGANIZATION IN YOUR COMMUNITY THIS WEEK

EDUCATORS: FIND WAYS TO INCORPORATE SERVICE INTO LEARNING

WEEK 4: SAFETY

ASK YOUTH ABOUT THEIR FEARS AND DISCUSS WAYS FOR THEM TO COPE

WORK TO CREATE A HOME SAFETY PLAN WITH YOUR YOUTH

QUIZ YOUR YOUTH WHAT WOULD THEY DO IN EMERGENCY?

WALK YOUR NEIGHBORHOOD AND HIGHLIGHT SAFE PLACES TO PLAY

SCHOOLS: ASK YOUTH WHAT IT MEANS TO BE SAFE IN YOUR BUILDING
RESPOND TO CONCERNS PROMPTLY

TSD APPROVED
not for distribution
not affiliated with TSD



BUILDING A HEALTHIER
COMMUNITY TOGETHER

TSD APPROVED
for distribution
not affiliated with TSD

Join us for a Community Conversation

TSD APPROVED
for distribution
not affiliated with TSD

Wednesday, October 24th

6:00-7:30 p.m.

Oxford Lane Library - Upstairs

Learn about the Coalition's current work
and share ideas to make the community
a healthier one for all !

For more information, call 513.273.3390.

ADVANCED INQUIRY PROGRAM

IGNITE ECOLOGICAL & SOCIAL CHANGE

Chicago

CZS/Brookfield Zoo

Cincinnati

Cincinnati Zoo & Botanical Garden

Cleveland

Cleveland Metroparks Zoo

Denver

Denver Zoo

New York

WCS/Bronx Zoo

San Diego

San Diego Zoo Global

Seattle

Woodland Park Zoo

St. Louis

Missouri Botanical Garden

**APPLY BY
FEB 28TH**

Study at a Master Institution; Earn your degree from Miami University!

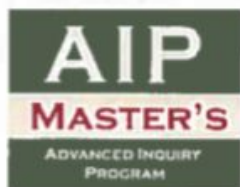
Photo: Golden lion tamarin, a species brought from the brink of extinction by zoos, scientists, governments, and communities working together.

TSU APPROVES
for distribution
not affiliate

AIP

MASTER'S

ADVANCED INQUIRY
PROGRAM



Apply at AIP.MiamiOH.edu

ISD APP for distri. not affiliated



THE AIP MASTER'S DIFFERENCE

The Advanced Inquiry Program (AIP) offers a ground-breaking master's degree that combines web-based graduate courses through Miami University with face-to-face experiential learning and field study at premiere community learning institutions nationwide. AIP students learn with peers and faculty nationally while also working directly through their local AIP Master Institution to improve their communities through shared investigation and action.

OUR AIP MASTER INSTITUTIONS

- ★ Chicago Zoological Society/Brookfield Zoo – Chicago
- ★ Cincinnati Zoo & Botanical Garden – Cincinnati
- ★ Cleveland Metroparks Zoo – Cleveland
- ★ Denver Zoo – Denver
- ★ Missouri Botanical Garden – St. Louis
- ★ San Diego Zoo Global – San Diego
- ★ Wildlife Conservation Society/Bronx Zoo – New York
- ★ Woodland Park Zoo – Seattle

SAMPLE GRADUATE COURSES

AIP master's students earn 35 total credit hours: 21 credit hours of courses that combine web-based instruction with the excitement of experiential learning and field study on-site at your AIP Master Institution + 14 credit hours of AIP core courses that occur on the web.

- Foundations of Inquiry
- Conservation Science & Community
- Urban Ecology
- Global Biomes
- Project Design & Assessment
- Issues in Evolution
- Biology in the Age of Technology
- Graduate Research: Conservation Innovation

AIP students also have the option to integrate international field study into their coursework by participating in an Earth Expeditions course in Africa, Asia, Australia, or the Americas (7 credits from Earth Expeditions courses can count toward the AIP master's degree).

PROJECT DRAGONFLY AND THE AIP

Project Dragonfly reaches millions of people each year through Inquiry-driven learning media, public exhibits, and graduate programs worldwide.

Project Dragonfly is based in the biology department at Miami University in Oxford, Ohio. Established as a state university in 1809, Miami is one of the eight original Public Ivies and has a distinguished record of excellence in research and teaching in science and science education.



Advanced Inquiry Program Details

Why Participate?

The AIP is based on the principle that education should extend beyond the classroom, and that students should make a difference—not just after graduation, but now, as a basic function of education itself. AIP students join a coalition of extraordinary educators and conservationists to improve neighborhoods, schools, businesses, and ecosystems, while advancing national education standards through research-based practices.

The AIP master's can be completed part-time while working. It's designed for educators and a broad range of professionals from non-profit, business, and government settings.

Who Is Eligible?

Enrollment is open to applicants who hold a bachelor's degree—regardless of academic major or profession—and who are able to travel to an AIP Master Institution. Coursework occurs online with experiential learning at affiliated institutions.

Degree Options

Applicants elect to enroll in either a Master of Arts in Teaching (MAT) in the Biological Sciences or a Master of Arts (MA) in Biology. MA and MAT candidates go through the Advanced Inquiry Program together.

Miami University is fully accredited by the Higher Learning Commission of the North Central Association of Colleges and Schools (please see <http://miamioh.edu/academic-affairs/accreditation/>).

Costs

To support involvement by a broad range of educators and conservation professionals nationally, Miami University offers significantly reduced tuition for all classes in pursuit of the web-based AIP degree.

Applying Online Is Easy!

Apply at AIP.MiamiOH.edu by February 28.

Master's program applicants will also apply to Miami University's Graduate School; best to start this process as early as possible.



Project Dragonfly
Inquiry | Community | Voice

TMS PTG Volunteer Sign Up

Parents,

The Talawanda Middle School Parent Teacher Group (TMS PTG) may be small but we are still out there working hard for TMS. We are looking for some volunteers to help with a few activities this school year. The role of TMS PTG is to basically. . . .

- 1- Support student groups with funding (ie. pay the entrance fee for a club to compete).
- 2- Organize and conduct fundraisers for class trips for each grade level.
 - * 6th grade trip "Glen Helen Experience"
 - * 7th grade trip "Columbus Zoo & COSI"
 - * 8th grade trip "Washington, D.C."
- 3- Support our teachers by
 - * Providing a meal on teacher conference night.
 - * Dropping off/organizing small treats for teachers throughout the year.

Our first meeting will be September 11th at 6:30. **We hold our meetings at the LaRosa's in Oxford. Pizza and drinks will be provided.** The purpose of the meeting will be to organize our events for the year and to create some small committees to run the events. Below are some of the events that we plan to hold this year.

SIGN UP TO RECEIVE EMAILS!

1- Parent/Teacher Conference Meals. (fall & spring)

TMS PTG will use "Signup Genius" to ask parents to donate drinks, food, or money to provide a dinner for teachers during conference nights.

2- 5th Grade Family Night at TMS. (May)

A chance for 5th grade families to visit, tour, and hear about programs offered here at TMS. We have 2 great years, and looking forward to another one.

3- Treats for Teachers (all year)

Pick a random day each month to organize a treat for the teachers. Examples would be. . .

- * October "Pumpkin treats"
- * November "Charlie Brown Thanksgiving"
- * February "Anything red"

We need VOLUNTEERS to pull this off!!

TMS PTG will use a web page (Sign-Up Genius) to organize volunteers and donations for our events. An email will be sent out to all of those who has submitted their email(s). It does not mean that you need to volunteer for every event. You still have the option to say no and join the next one.

IT IS A GREAT WAY TO KEEP UP WITH EVENTS AT TMS!



Talawanda School District
131 W. Chestnut St.
Oxford, Ohio 45056

TALAWANDA SCHOOL DISTRICT



EMERGENCY GUIDE

Talawanda School District
Ed Theroux, Superintendent



In the Talawanda School District, safe and secure learning environments are the first priority:
Students must first feel safe in order to grow academically, socially, and emotionally.

It is important to communicate actions that ensure safe school environments. Every emergency situation is unique in initiation and response so the information in this material is not all inclusive. However, it is intended to provide a better understanding of responses in the event of a crisis or emergency.



TALAWANDA SCHOOL DISTRICT EMERGENCY GUIDE

TIP LINE:
844-SAFEROH

Through partnerships with the Ohio Department of Education and the Ohio Department of Public Safety, every school in Ohio has been registered for SaferOH, a tip line that proactively helps to ensure the safety and well-being of its students.

By calling **1 (844) SAFEROH**, students and adults can share information with district and law enforcement officials regarding threats to school or student safety, such as bullying, suicides, or violence.

Callers may remain anonymous or share their contact information for possible follow-up. The line will accept both calls and texts 24 hours a day, 7 days a week.

LIKE:

Web: www.talawanda.org

FOLLOW:

Twitter: @Talawanda

SHARE:

Facebook: [facebook.com/Talawanda School District](https://www.facebook.com/Talawanda-School-District)



An emergency is any unexpected incident that could affect the health or safety of students or employees

... such as a disruption in utilities or a national emergency. Emergencies can affect one child, one school, or the entire school district.

When an emergency occurs, school officials evaluate the seriousness of the situation and determine the best plan of action to respond quickly, safely, and appropriately. Emergency responders such as police, fire, and medical teams are notified and assist as needed.

EMERGENCY RESPONSE

Each Ohio school district has an emergency preparedness plan outlining possible scenarios and responses that vary based on conditions and situations.

The crisis management team, a team in each school that has emergency training, determines the best crisis response. In the event that the response includes an emergency student dismissal, it is important for parents to understand that students will be dismissed to parents once danger has passed.

In any emergency situation it is critically important that school leaders and safety personnel respond quickly. According to law enforcement and safety officials, it is important that parents wait for a call to pick up their children rather than rush to a site. Parents of students in the affected building will receive detailed information as soon as possible.

FOUR COMMON RESPONSE OPTIONS

LOCKDOWN

1 A lockdown may be used in response to an event inside or outside of a building. During a lockdown, students are restricted to their classroom and are not released from the classroom until lockdown procedures have concluded.

SHELTER-IN-PLACE

2 This protective action is enacted when an event takes place outside of the building and officials determine that the safest course of action is to keep students and staff inside the building until the external event is resolved. During shelter-in-place, there could be student movement within the building, but students will not be released from the building until the shelter-in-place procedures have concluded.

EVACUATION

3 If it is unsafe for students and staff to remain inside the building, the building will be evacuated. Students and staff may remain on school grounds until the building is safe to re-enter or may be relocated to a safe location off of school property, depending on a variety of circumstances.

EMERGENCY SCHOOL CLOSING

4 This procedure will take place if your school officials determine students are safer at home than at school or trying to get to school. This most often occurs due to loss of utilities or a weather emergency.

If your school or school district intends to send students home or evacuate from a risky location to safe location, specific information will be communicated to the parents of affected students through a phone call.

RESPONSE TO ACTIVE AGGRESSOR

In Ohio school districts, students and staff in all buildings are trained three times each year in an emergency response process known as ALICE. Most often used in the event of an active aggressor, ALICE empowers students and teachers to ensure their personal safety.

It is important to remember that ALICE is not a linear progression and response action, but is dependent on the individual situation. Decisions are made by teachers and students to ensure their personal safety.

A **ALERT:** Alert students and staff of an active aggressor.

L **LOCKDOWN:** Barricade a locked door with large objects, such as desks, chairs, shelves, etc.

I **INFORM:** Listen for communication, make informed decisions as to what action should be taken.

C **COUNTER:** If confronted by an aggressor, attempt to distract or confuse in order to get away.

E **EVACUATE:** Leave the area if it is unsafe based on all available information and observations.

Student Release Student-Parent Reunification

1 In the event of an emergency situation during which a parent chooses to remove his/her child from school, or one that requires students to go home, your school district will care for each student until a parent arrives or until it is safe to transport the student home using district school transportation. Be assured that no child will be left alone.

In a **situational student release**, school officials determine that students and staff members need to evacuate a building temporarily but DO NOT need to close school

or dismiss students. Parents who elect to remove students during the time of an evacuation will need to report to a designated area with photo ID to sign out students. Emergency contacts designated for student release by parents may also remove specific students from school with a photo ID. For safety reasons, no other individuals are permitted to take students from a school.

2 **Reunification** occurs when school officials determine that students and staff members need to evacuate a building,

close school, and dismiss students. The closing of school may require that the students be relocated to a secondary location. If students are relocated to an off-campus reunification site, a "gated reunification system" will be in place. Parents of emergency contacts will be required to pick up students either on campus or from the secondary reunification location.

3 In the event of an **evacuation to another location**, Parents of students in the affected building will receive a phone call with detailed information. Evacuation locations are not made public in advance so as not to jeopardize the efficiency or safety of the plan.

Gated Reunification System

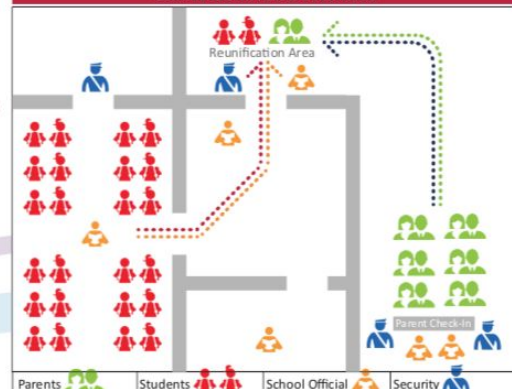
Students may only be released to a parent or emergency contact designated for student release. Photo identification is required.

4 Upon arrival at the reunification site, parents will:

1. Report to the parent check-in area;
2. Complete a reunification card;
3. Be escorted by a staff member to his/her child; and
4. Sign the reunification card to ensure all students are accounted for and safe.

Crisis Response Team
1 Your district personnel are trained using the **Traumatic Event Crisis Intervention Plan**. TECIP is a school-based framework designed to meet the emotional and psychological needs of students and staff in the aftermath of a traumatic event.

SAMPLE REUNIFICATION SCENARIO



Attention Talawanda Middle School Families!

Save your Plastic Caps and Lids!

Please start saving your plastic caps and lids! The National Junior Honor Society (NJHS) is leading a bottle cap and plastic lid recycling initiative at TMS. The recycled bottle caps and lids will be collected until we have enough to **make a bench for TMS made completely of recycled lid and cap plastic** material we have collected!

Here is how you can help us:

- **Collect plastic bottle caps and plastic lids** (see list of acceptable caps and lids below)
- Feel free to collect large amounts at home and bring to school in grocery bags or ziploc bags - the whole bag can be placed in the collection bin
- **Please rinse** all lids and caps before bringing them to school
- Place lids and caps in a **collection bin** - there is one located in each grade level hallway and one in the cafeteria
- Collection will continue until we have enough to build a bench for TMS (Kramer and Marshall already have benches and Bogan is collecting this year for a bench!)
- Spread the word! Tell your friends, family, and neighbors and ask them to collect too!
- This benefits our community (recycling!), the school (we get a bench!), and you (you help make TMS a better place!)
- Questions? Contact NJHS Advisor Mrs. Murray murraym@talawanda.org

NJHS students will be responsible for collecting, cleaning, and sorting lids and caps here at school. This project is possible through the ABC Promise Partnership program at Green Tree Plastics, LLC. We appreciate your help in this project that promotes recycling and will benefit our school with a new bench!

ACCEPTABLE CAPS

medicine bottle caps	drink bottle caps
milk jug caps	flip-top caps (ketchup, mustard)
detergent caps	spout caps (mustard)
hair spray caps	spray paint caps
toothpaste tube caps	ointment tube caps
deodorant caps	caps w/ RECYCLE NUMBERS of (2) (4) (5)

ACCEPTABLE LIDS

cottage cheese container lids	cool whip container lids
mayonnaise jar lids	coffee can lids
yogurt lids	cream cheese container lids
peanut butter jar lids	butter container lids
ice cream bucket lids under 8"	Prescription bottles labels removed

TMS Clubs!!!

Please also visit our TMS web page to view clubs.

Yearbook Club

Plan, design yearbook

Advisors: Sharon Oberschlake and Suzanne Burch

oberschlakes@talawanda.org

burchs@talawanda.org

TMS Garden Club

We are building a new TMS garden to learn about where our food comes from, how to grow it in the most environmentally responsible way possible, and eventually share what we grow with the cafeteria salad bar or the Oxford Food Pantry. We will have our science classes test our soil, the STEAM club is helping build what we need, and we will research what grows best in our seasonal climate. We will have guest speakers in the winter including botanists, members of Miami's Slow Food Initiative, and various others.

Advisors: Amy Clay and Lindsay Krause

claya@talawanda.org

krausel@talawanda.org

Math Club

6th graders

Miami University tutors every Thursday after school to help students with the math content, common misconceptions and preparation. We currently have 46 students and about 14 Miami students participating.

Advisors: Don Gloeckner and Tammi Waite

gloecknerd@talawanda.org

waitet@talawanda.org

Outdoor Adventure Club

The Outdoor Adventure Club is a series of field trips on the 3rd Wed. of each month in cooperation with Miami University's Outdoor Pursuit Center. Students learn outdoor skills while participating in unique activities at outdoor sites around Oxford. Registration for trips is done directly through Miami University.

More info, including specific trip destinations, costs, dates, and registration, can be found by accessing the Google Classroom for the club with the course code: rvw303o

Or, by contacting Mr. Hricko at hrickos@talawanda.org"

Craft Club

Open to All TMS Students

Advisors: Cherie Day and Carolyn Ratliff

Meeting Time: Most meetings are held the second Thursday of the month and are announced on the morning and afternoon school announcements.

We plan and complete craft projects according to student interests. Join us for fun and creativity.

TMS Little Aggies

Open to 6-8th grades

Middle School Agricultural Program!

Leadership, agriculture, & fun to be had by all!

Advisor: Mike Derringer, THS FFA teacher

derringer@talawanda.org

Middle School Contact: Steven Hricko

hrickos@talawanda.org

Drama Club

The purpose of the club is to put on an annual school musical.

Advisor: Kelly Case (assisted by Beth Fryer)

casek@talawanda.org

fryerb@talawanda.org

Peer Mediators

We meet Wednesdays during 7th and 8th grade tutorial

Students are being trained in conflict resolution and once they are fully trained, students will be able to help peers who are in conflict to resolve their issues peacefully using compromises and win/win solutions.

Advisor: Laura Jewett

jewettl@talawanda.org

Student Council (elected students)

Scheduled Meetings - Friday's after school

Gather student input hosts events, raise money, etc... to benefit TMS

Advisor: John Brinck

brinckj@talawanda.org

Mathcounts Competition Team

A national middle school coaching and competitive mathematics program that promotes mathematics achievement through a series of fun and engaging "bee" style contests. The program provides engaging math programs to U.S. middle school students of all ability levels in order to build confidence and improve attitudes towards math and problem solving.

Advisor: Lori Gloeckner gloecknerl@talawanda.org

National Junior Honor Society (NJHS)

NJHS is a group for 8th graders that are selected to become members at the end of 7th grade. Members are selected based on academics (3.75 or above cumulative GPA for all of 6th grade and the first two trimesters of 7th grade), community service involvement, leadership, and character. The chapter has meetings during the regular school day and participates in many school and community initiatives.

For 6th and 7th graders interested in becoming members as 8th graders: keep your grades up, take on leadership roles at school and in other activities, keep your behavior and actions in good conduct, and perform community service!

Megan Murray, Advisor

murraym@talawanda.org

Guitar Club (The Shredi Knights)

We learn how to practice, maintain and improve musical theory understanding and guitar upkeep. We also just do some jamming together to get used to playing with other musicians live!

Advisor: Raj Sundram

sundramr@talawanda.org

Writer's Club

Advisor: Cheri Day

dayc@talawanda.org

Talawanda Diversity Club

Introducing the new Talawanda Middle School Diversity Club! We are interested in spreading appreciation of the differences that every student brings to TMS, and celebrating what makes each one of us unique. We will explore what we can do at school and in our greater community to help our place be safe and inclusive for all students.

Advisor: Amy Clay

claya@talawanda.org